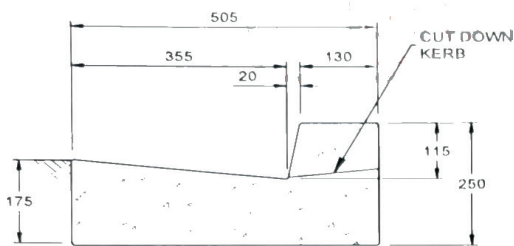
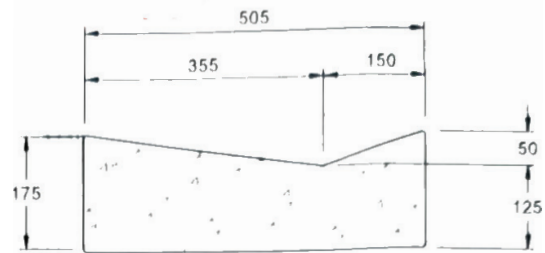


Wanaka/QT

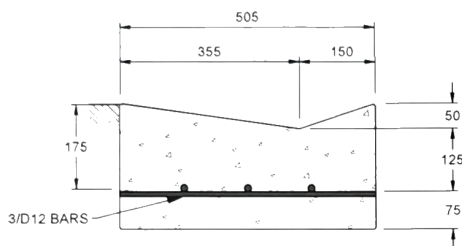
- Figures on the left hand side of each profile relate to the base height below top of kerb/edge dish.
- All string line offsets are 150mm behind back of kerb or side of channel.
- For extra strength – fibre mesh may be added.
- Please phone with any queries/for more information.



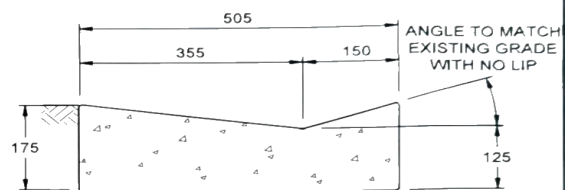
No. 1A Kerb & Channel



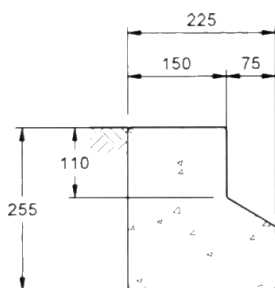
No. 2 Vehicle Crossing



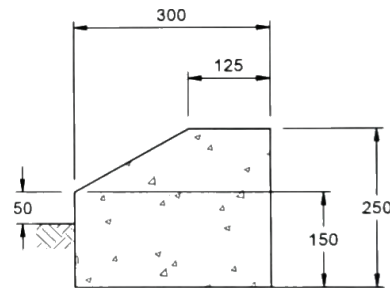
No. 2A Commercial Vehicle Crossing



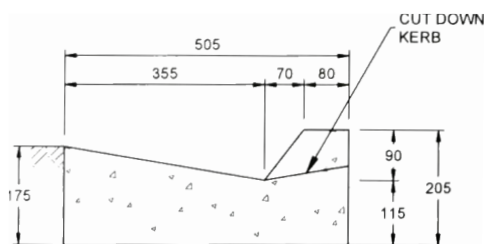
No. 2B Cyclist/Pram Drop Down



No. 3 Slip Form Kerb



No. 5 Mountable Kerb



No. 8 Mountable Kerb & Channel



No. 16 Dish Channel