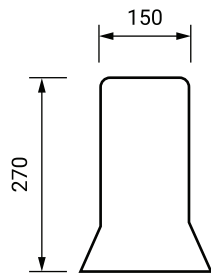
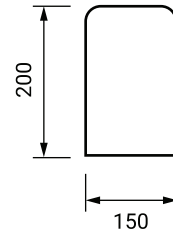


KARB ONLY

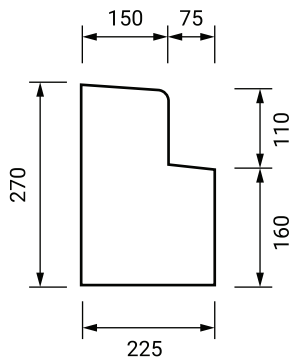
- Figures on the left hand side of each profile relate to the base height below top of kerb/edge dish.
- All string line offsets are 150mm behind back of kerb or side of channel.
- For extra strength – fibre mesh may be added.
- Please phone with any queries/for more information.



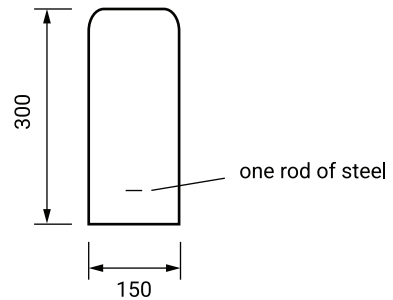
Kerb Only CCC SD 602



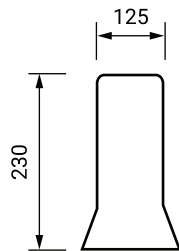
Kerb Only 200 x 150



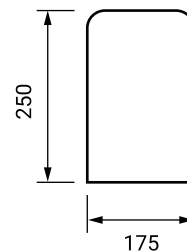
Kerb and Nib CCC SD 602



Kerb Only with Steel



Kerb Only TDC Std



Kerb Only (175 x 235)